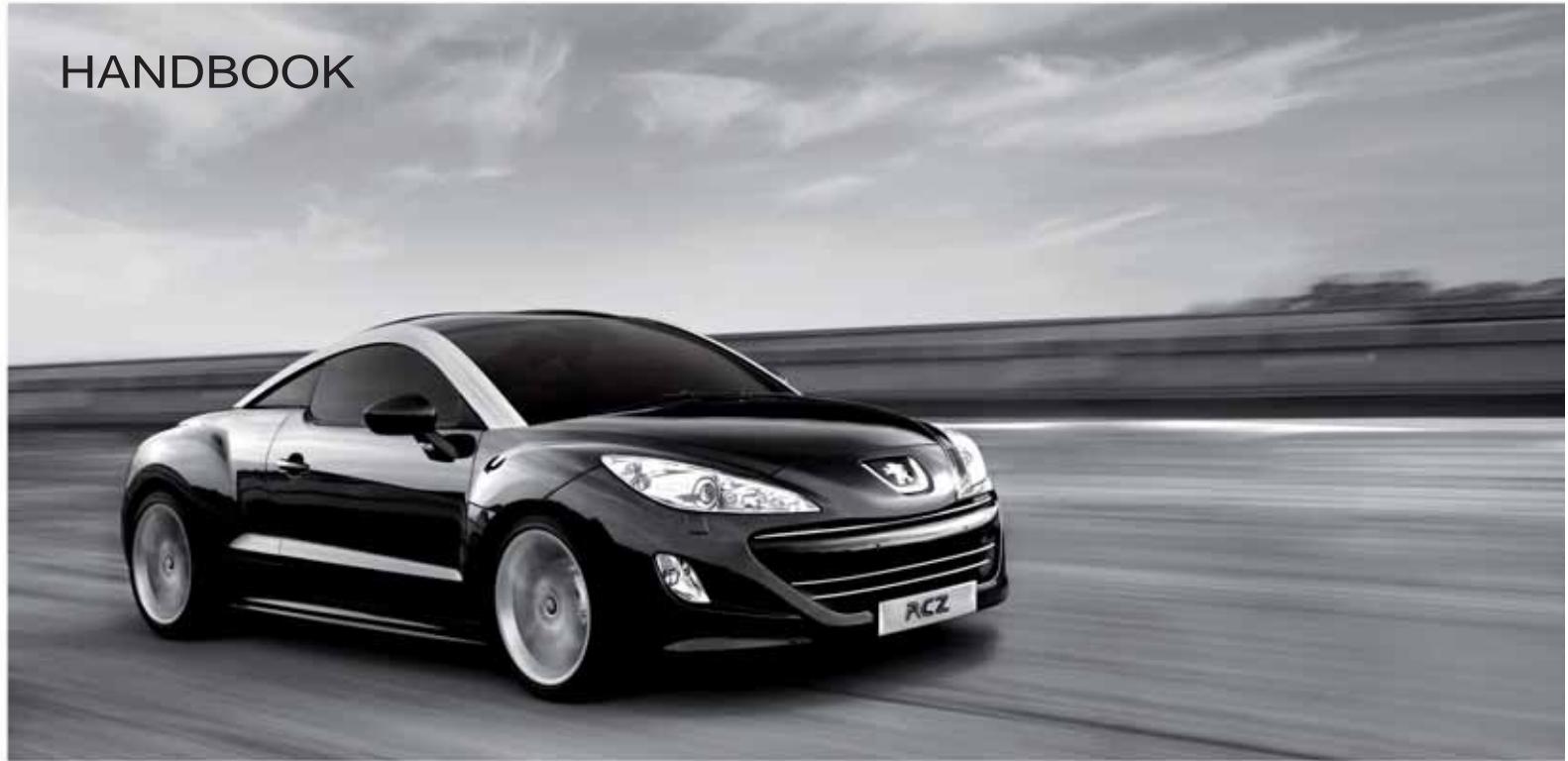


# HANDBOOK



**RCZ**



# EXTERIOR

## 1 Welcome lighting

This additional exterior and interior lighting, controlled remotely, makes your approach to the vehicle easier when the light is poor.

➔ 82

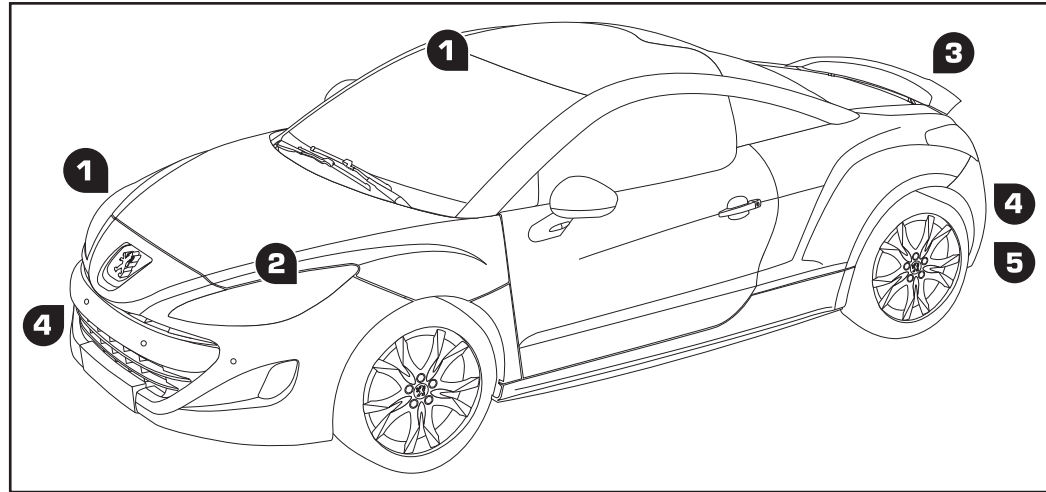
## 2 Directional lighting

This lighting automatically provides additional visibility when cornering.

➔ 98

## ! Aluminium arches

For maintenance of these arches, do not use a dry cloth with an abrasive product. Use a sponge and soapy water.



## 3 Active spoiler

This system improves the aerodynamics of the vehicle.

➔ 110

## 4 Front and rear parking sensors

This system warns you of any obstacles detected in front of or behind the vehicle when parking.

➔ 142

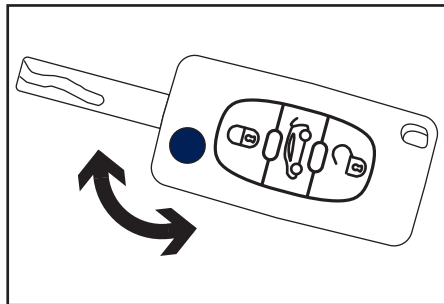
## 5 Temporary tyre repair kit

This kit is a complete system, consisting of a compressor and an integrated sealant product, for the temporary repair of a tyre.

➔ 156

# OPEN

## REMOTE CONTROL KEY



Unfolding/Folding of the key  
(press first before unfolding or folding the key).



Normal locking  
(press once; fixed lighting of the  
direction indicators).

or



Deadlocking the vehicle  
(press twice in succession; fixed  
lighting of the direction indicators).



54



Unlocking and partial opening of  
the boot lid  
(press for more than two seconds).



Complete or selective unlocking of  
the vehicle  
(rapid flashing of the direction  
indicators).

## WELCOME LIGHTING

When poor light is detected by a sensor,  
the remote switching on of the dipped beam  
headlamps and sidelamps makes your  
approach to the vehicle easier.



83

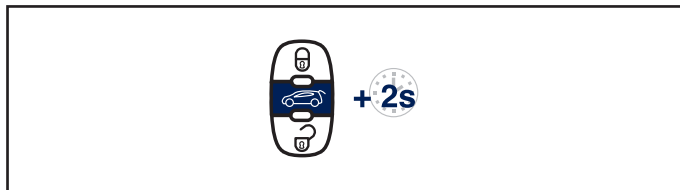


82

In the same way, the passenger compartment  
lighting, such as the courtesy lamps, the door  
sill lamps and the footwell lamps, comes on.

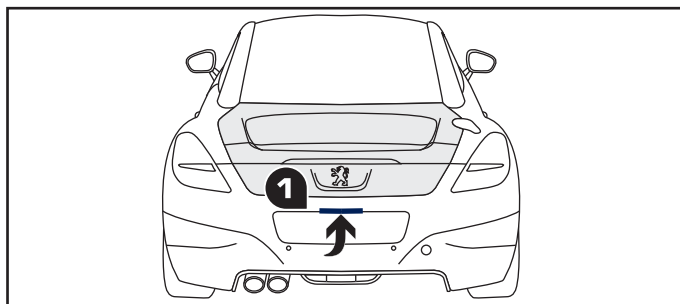
## BOOT

### Vehicle locked



1. Unlocking and partial opening of the boot lid.
2. Opening of the boot lid.

### Vehicle unlocked

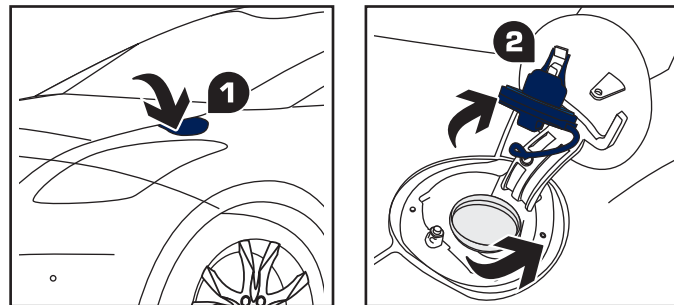


1. Partial opening of the boot lid.
2. Opening of the boot lid.



66

## FUEL TANK



For access to the fuel filler cap, the vehicle must be unlocked.

1. Open the fuel filler flap by pressing at its rear edge.
2. Remove the fuel filler cap by unscrewing it and hook it on to the back of the filler flap.

Capacity of the tank: approximately 55 litres.



146

# INTERIOR

## 1 Interior mood lighting

This dimmed lighting of the passenger compartment facilitates visibility inside the vehicle when the light is poor.



## 2 Audio and telematics systems

This equipment benefits from the latest technology: MP3 compatible Peugeot Connect Sound, Bluetooth, Peugeot Connect Media with 16/9 retractable colour screen, JBL audio system, auxiliary sockets.

### Peugeot Connect Media

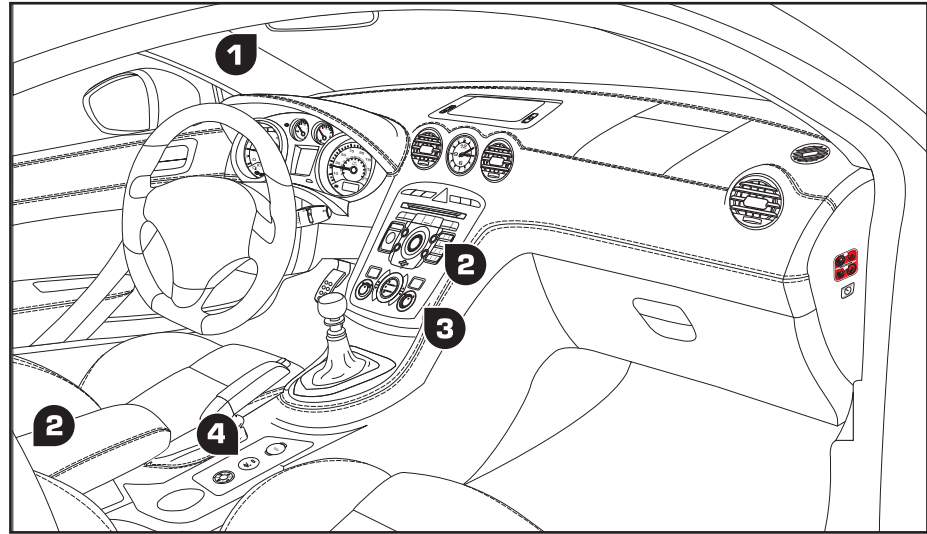


### Peugeot Connect Sound/Bluetooth



## ! PEUGEOT Techno PVC

For maintenance of this covering, do not use solvent or detergent with a dry cloth. Remove dust first, then use a soft cloth and soapy water. Dry using another soft cloth.



## 3 Dual-zone digital air conditioning

This systems allows different levels of comfort to be set for the driver and front passenger. It then controls these levels automatically according to the ambient conditions.



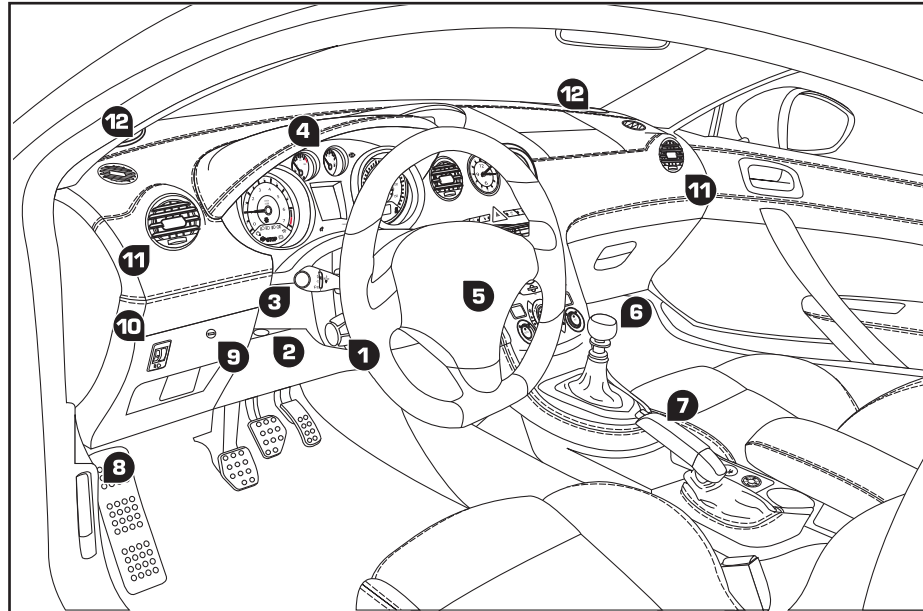
## 4 Active spoiler

This automatic system can be controlled manually by means of this control on the centre console.



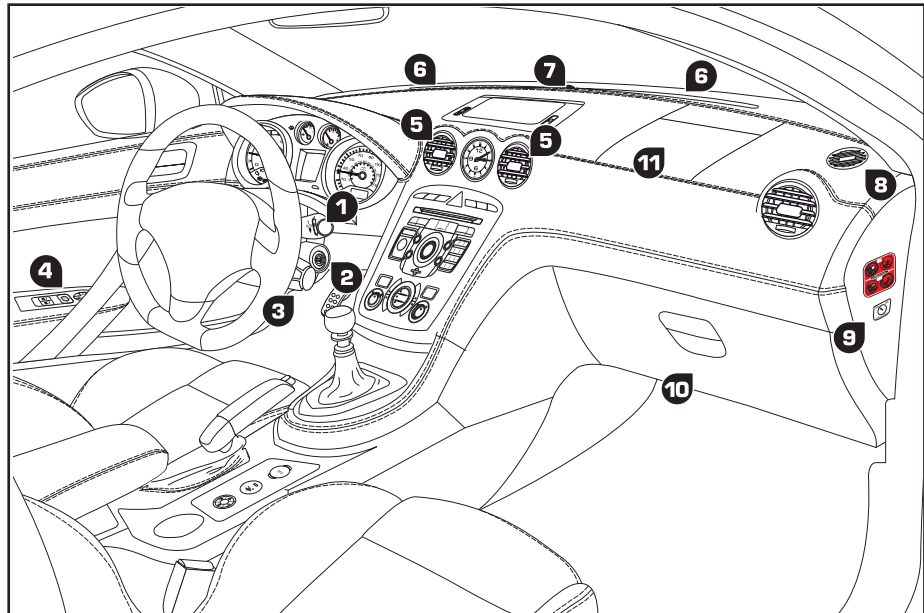
## INSTRUMENTS AND CONTROLS

1. Cruise control/speed limiter switches.
2. Steering wheel adjustment control.
3. Lighting and direction indicators control stalk.
4. Instrument panel.
5. Driver's airbag.  
Horn.
6. Gear lever.
7. Parking brake.
8. Bonnet release.
9. Fusebox.
10. Manual headlamp height adjustment.
11. Side adjustable air vent.
12. Speaker (tweeter).



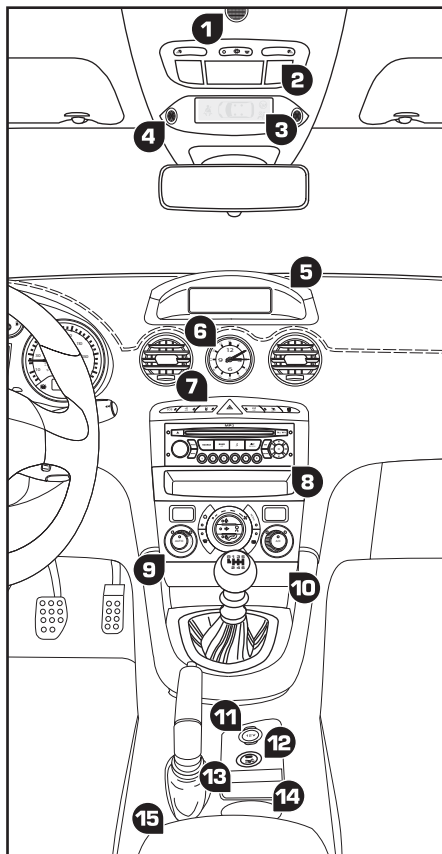
## INSTRUMENTS AND CONTROLS

1. Wipers/screenwash/trip computer control stalk.
2. Steering lock and ignition.
3. Audio and telematics system steering wheel control stalk.
4. Door mirror controls.  
Electric window controls.
5. Central adjustable air vents.
6. Windscreen demisting vent.
7. Sunshine sensor.
8. Front side window demisting vent.
9. Passenger's airbag deactivation switch.
10. Glove box/Audio/video sockets.
11. Passenger's airbag.

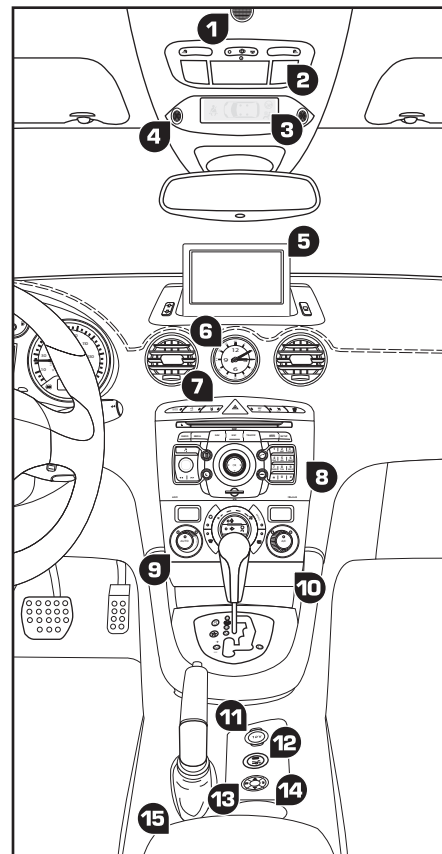




## CENTRE CONSOLES



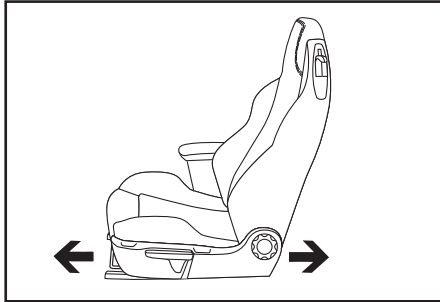
1. Audio and telematics system microphone.
2. Courtesy lamp/Map reading lamps/Interior mood lighting.
3. Seat belt and front passenger's airbag warning lamps display.
4. Interior volumetric sensors (alarm).
5. Multifunction screen.
6. Clock.
7. Emergency call button.  
Alarm button.  
Central locking button.  
Hazard warning lamps button.  
Dynamic stability control (ESP/ASR/EBA) button.  
Parking sensors button.  
PEUGEOT services button.
8. Peugeot Connect Sound and storage compartment or Peugeot Connect Media.
9. Heating/air conditioning controls.
10. Front ashtray.
11. 12 V accessories socket.
12. Active spoiler control.
13. Storage compartment or instrument panel navigator associated with the Peugeot Connect Media.
14. Cup holder.
15. Front armrest/USB/auxiliary socket.



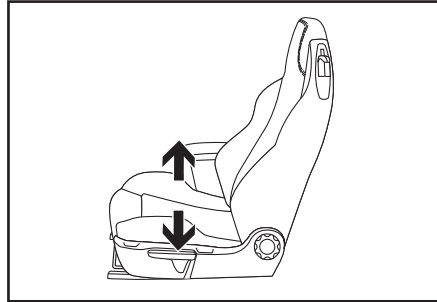
# SITTING COMFORTABLY

## FRONT SEATS

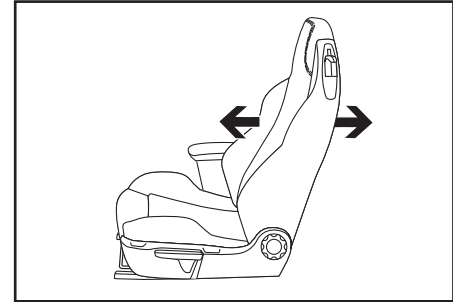
Forwards-backwards



Height

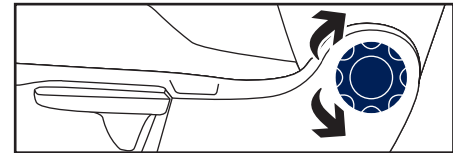
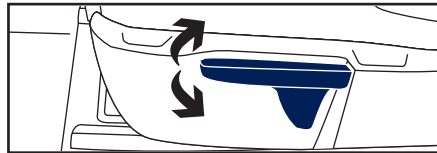
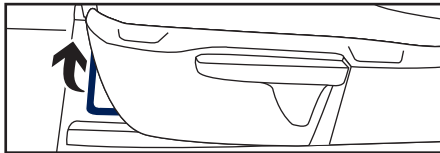


Seat back angle



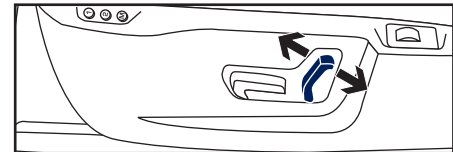
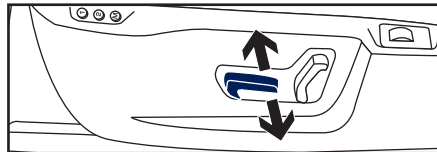
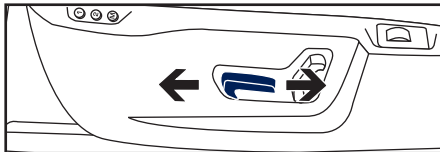
## MANUAL ADJUSTMENTS

▶ 67



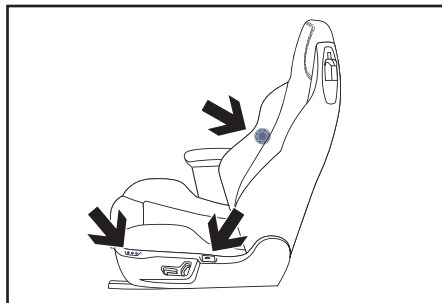
## ELECTRIC ADJUSTMENTS

▶ 68



FAMILIARISATION

## SITTING COMFORTABLY FRONT SEATS



### Other functions available...

Lumbar adjustment.



69

Heated seats.



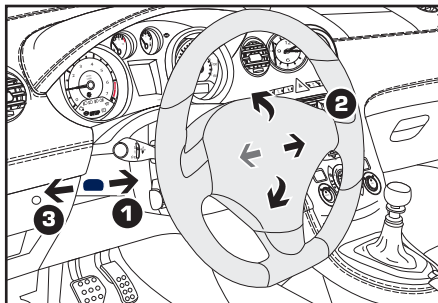
69

Storing of driving positions (driver's electric seat).



70

## STEERING WHEEL ADJUSTMENT



1. Unlock the control.
2. Adjust for height and reach.
3. Lock the control.

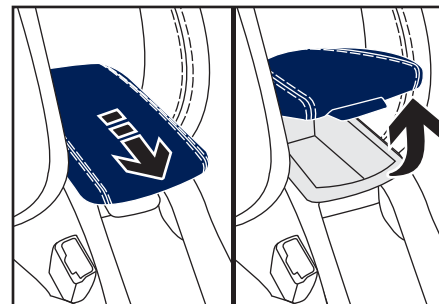
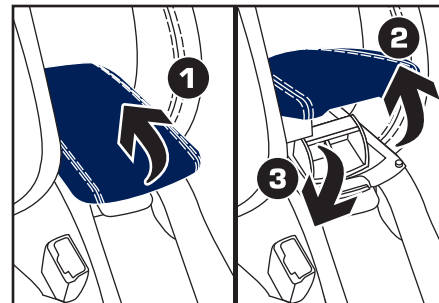


As a safety precaution, these operations must only be carried out when stationary.



71

## FRONT ARMREST



For your comfort, the height and the longitudinal position of the front armrest can be adjusted.

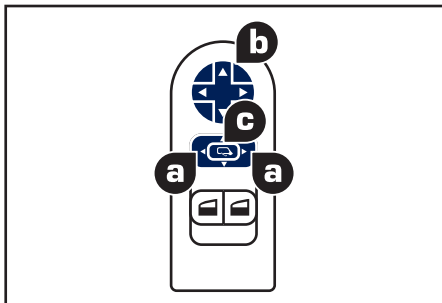
It also offers a storage compartment.



87

## SITTING COMFORTABLY

### DOOR MIRRORS



#### Adjustment

- A. Selection of the mirror to be adjusted.
- B. Adjustment of the position of the mirror in the four directions.
- C. De-selection of the mirror.

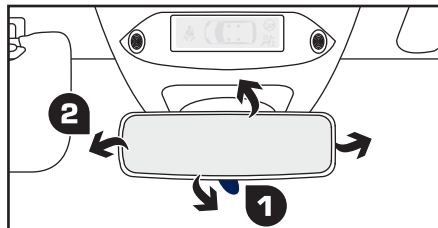
▶ 72

#### **i** Other functions available...

Folding/Unfolding.  
Automatic tilting of the mirror in reverse gear for parking.

▶ 73

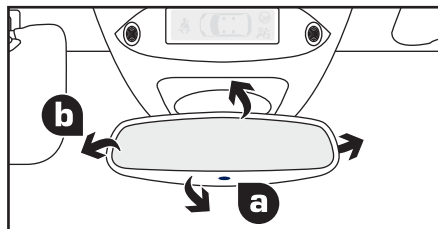
### REAR VIEW MIRROR



#### Manual day/night model

1. Selection of the "day" position of the mirror.
2. Adjustment of the mirror.

▶ 74



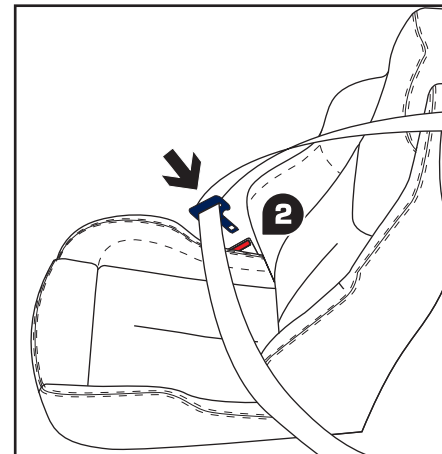
#### Automatic day/night model

- A. Automatic "day/night" mode light detector.
- B. Adjustment of the mirror.

▶ 74

### FRONT SEAT BELTS

1. Fitting the belt.

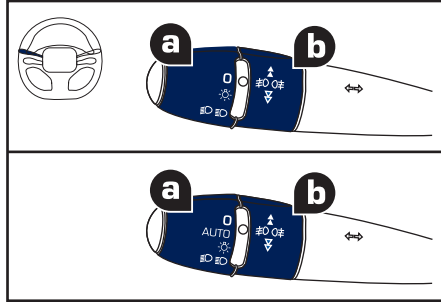


2. Fastening the buckle.
3. Checking the fastening by pulling the strap.

▶ 112

# SEEING CLEARLY

## LIGHTING



### Ring A

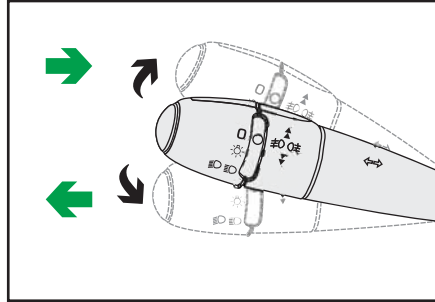
- Lighting off.
- AUTO Automatic illumination of headlamps.
- Sidelamps.
- Dipped/main beam headlamps.

### Ring B

- Front and rear foglamps.

93, 94

## DIRECTION INDICATORS



Raise or lower the lighting stalk passing the point of resistance; the corresponding direction indicators will flash until the stalk is moved from this position.

103

### "Motorway" function

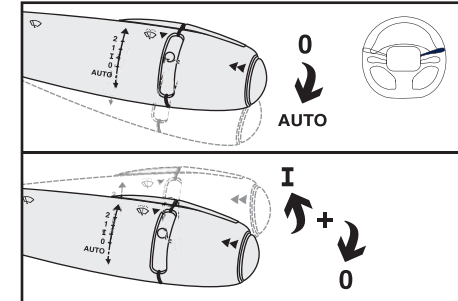
Press the lighting stalk up or down once, without passing the point of resistance; the corresponding direction indicators will flash three times.

The use of this function is available regardless of the speed, but you will find it particularly useful when changing lane on fast roads.

## WINDSCREEN WIPERS

2. Fast wipe.
  1. Normal wipe.
  - I. Intermittent wipe.
  0. Park.
- AUTO** Automatic wipe or single wipe.  
Wash-wipe: pull the stalk towards you.

99



### Switching on "AUTO"

- Press the stalk down and release it.

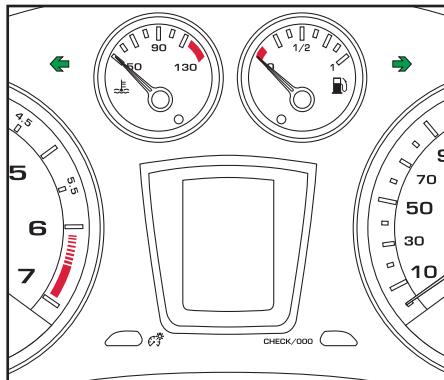
### Switching off "AUTO"

- Push the stalk up and return it to position "0".

101

# MONITORING

## INSTRUMENT PANEL



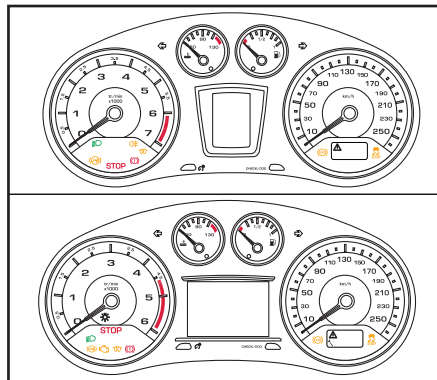
The instrument panel has permanent back-lighting for improved visibility in all situations, both day and night.

- With the ignition on, the fuel gauge needle should indicate the level of fuel remaining.
- With the engine running, its associated low level warning lamp should switch off.
- With the ignition on, the oil level indicator should display "OIL OK" for a few seconds.

If the levels are not correct, top up the levels which are low.

➔ 20

## WARNING LAMPS

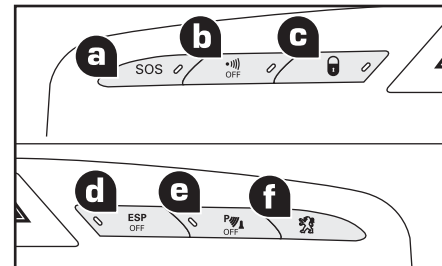


- With the ignition on, the orange and red warning lamps come on.
- With the engine running, these warning lamps should switch off.

If warning lamps remain on, refer to the page concerned.

➔ 24

## SWITCH PANEL



Lighting of the indicator lamp indicates the status of the corresponding function.

A. Emergency call in progress.

➔ 195

B. Deactivating the interior volumetric and anti-tilt sensors (alarm).

➔ 59

C. Central locking.

➔ 64

D. Deactivation of the ESP/ASR/EBA system.

➔ 108

E. Deactivation of the front and rear parking sensors.

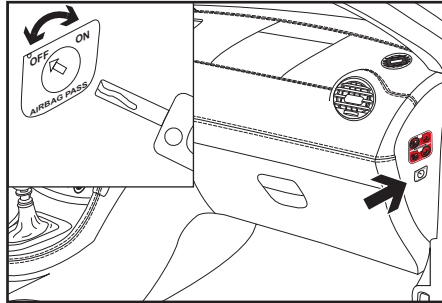
➔ 143

F. Access to PEUGEOT services.

➔ 195

# PASSENGER SAFETY

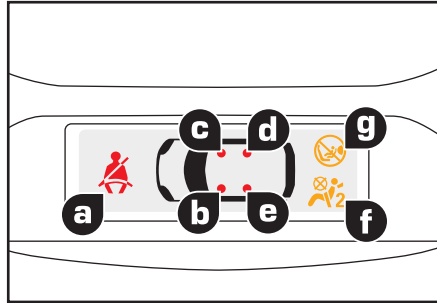
## PASSENGER'S FRONT AIRBAG



Selection of the position:  
**"OFF"** (deactivated), with "rear facing" child seat,  
**"ON"** (activated), with front passenger or "forwards facing" child seat.

➔ 116, 120

## SEAT BELTS AND PASSENGER'S FRONT AIRBAG

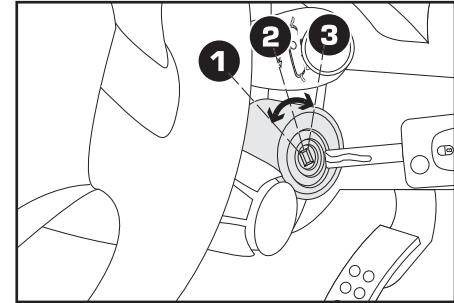


- A. Front and/or rear seat belts not fastened/unfastened warning lamp.
- B. Front left seat belt warning lamp.
- C. Front right seat belt warning lamp.
- D. Rear right seat belt warning lamp.
- E. Rear left seat belt warning lamp.
- F. Passenger's front airbag deactivated warning lamp.
- G. Passenger's front airbag activated warning lamp.

➔ 112, 116, 120

# STARTING

## IGNITION SWITCH



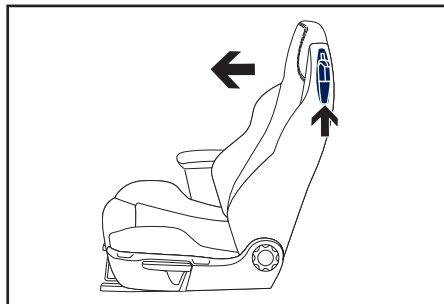
1. **Stop** position.
2. **Running** position.
3. **Starting** position.

ⓘ Avoid attaching any heavy objects to the key which would weigh down on its shaft in the ignition switch; this could cause a malfunction.


➔ 127

## AT THE REAR

### ACCESS TO THE REAR SEATS

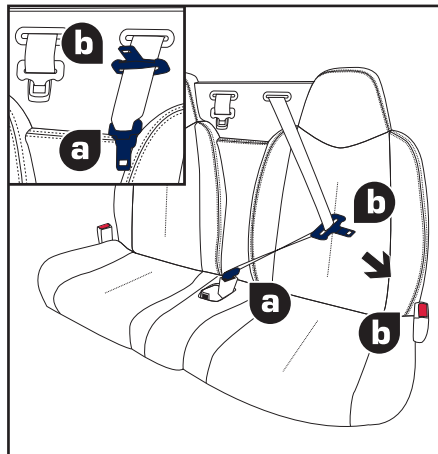


1. Releasing the backrest.
2. Tilting the backrest.

 The control giving access to the rear seats does not release the seat.

 75

### REAR SEAT BELTS

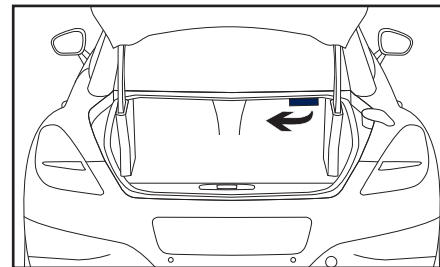


- Insert the tongue **A** in the buckle **A** in the middle of the rear seat.
- Insert the tongue **B** in the outer buckle **B**.

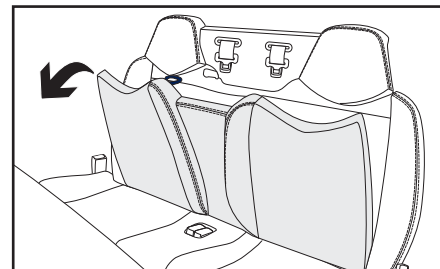
Press the red button **B** then the black button **A** to remove the seat belt.

 113

### FOLDING DOWN THE REAR BACKREST



1. Release the backrest by pulling the handle from the boot.

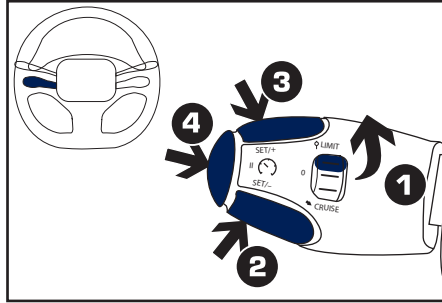


2. Fold the backrest onto the seat cushion from the passenger compartment.

 75

# DRIVING SAFELY

## SPEED LIMITER "LIMIT"



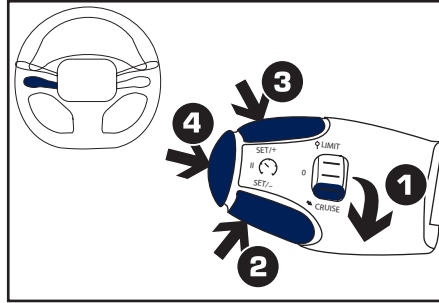
1. Limiter mode Selection/Off.
2. Decreasing of the programmed value.
3. Increasing of the programmed value.
4. Speed limiter On/Off.

The values must be set with the engine running.



136

## CRUISE CONTROL "CRUISE"



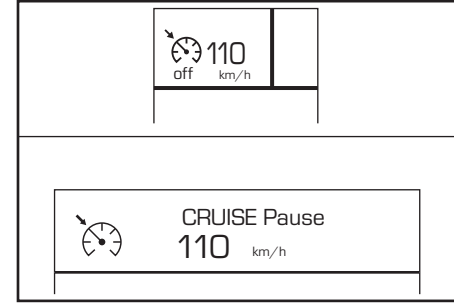
1. Cruise control mode Selection/Off.
2. Programming a speed/Decreasing of the programmed value.
3. Programming a speed/Increasing of the programmed value.
4. Cruise control Off/Resume.

In order to be programmed or activated, the vehicle speed must be higher than 25 mph (40 km/h), with at least fourth gear engaged on the manual gearbox (second gear for the automatic gearbox).



139

## DISPLAY ON THE INSTRUMENT PANEL



The cruise control or speed limiter mode appears on the instrument panel when it is selected.



Cruise control



Speed limiter



FAMILIARISATION